

# SUNFLEX<sup>®</sup>

**Reflective**  
building foils

## Reflexive Diffusion Membrane

### SUNFLEX CONTACT

The super-diffusion hydro-insulating safety membrane SUNFLEX CONTACT with a metal-coated external reflexive layer combines excellent heat reflection properties of SUNFLEX<sup>®</sup> products with a high degree of vapour permeability. The reflexive metal-coated layer effectively protects against radiating heat in summer. The special three-layer technology, thanks to its high permeability, allows for full water vapour exhaust from the roof construction, at the same time providing full protection against rainwater infiltration in the building construction.

Application area: double-coated roofs.



## Properties

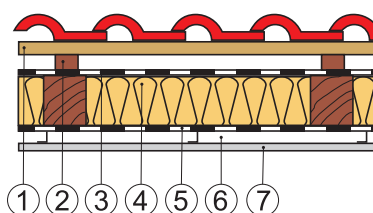
- Reflects up to 70% of thermal sunrays
- High tenacity, load-bearing capacity and resistance to threading-through
- High vapour permeability
- Quality safety hydro-insulation
- 3-month resistance against UV radiation
- Storage outside the reach of UV radiation
- Layer structure: metal-coated PPL textile – waterproof membrane – PPL textile

## Assembly

Stretch the foil across the roof frame with the reflexive side facing the roofing. Apply the foil right over the thermal insulation layer, or the boarding. Fixation to the truss is provided by counter-lathes. The individual belt overlap is 10-15 cm. For reduced thermal loss it is recommended to provide for wind resistance of the construction by gluing the joints together with an adhesive tape. The joints will need gluing in the case of truss gradient below 20 degrees. The foil is ended in the bottom part on the weatherboard.

## SUNFLEX Roof System

The diffusion foil Sunflex Contact together with the vapour-proof foil Sunflex Roof-In form a high energy-saving system providing optimum protection to the building construction and its thermal insulation against physical processes and effects (humidity, leaks, abrupt temperature changes shortening the life of the material etc.).



1. Lathing
2. Counter-lathes
3. Diffusion foil Sunflex Contact
4. Thermal insulation
5. Vapour-proof reflexion foil Sunflex Roof-In
6. Air gap created by wooden lathes or CD profiles
7. Inside coat

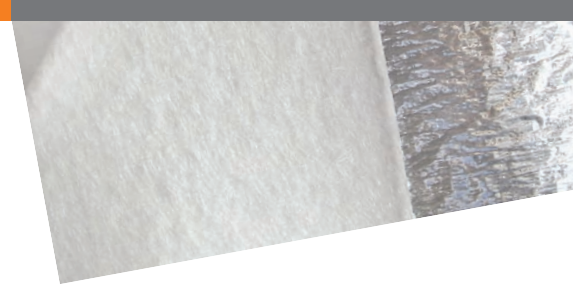
MANUFACTURER:



TART, s.r.o.  
Vinohradská 91  
618 00 Brno  
Phone +420 548 210 500

[www.sunflex.cz](http://www.sunflex.cz)

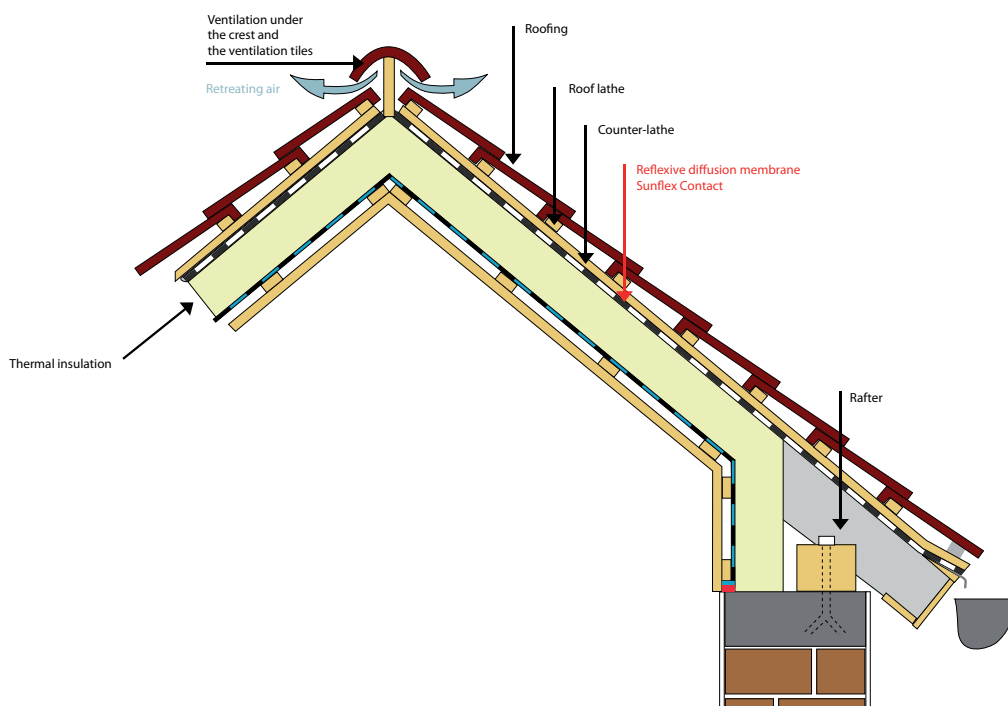
**Cheap saving of expensive energy**



### Reflexive Diffusion Membrane

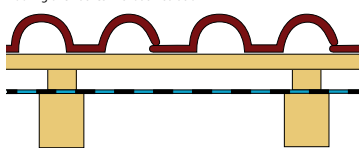
## SUNFLEX CONTACT

This foil will reduce temperature in the building by up to **5 degrees C** in the summer period  
 This foil reflects up to **70%** of radiating sunshine

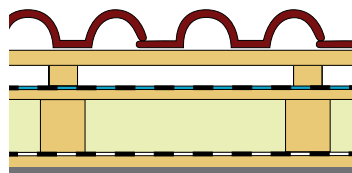


### Roofing Compositions

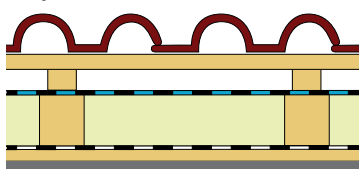
Roofing over lathes without insulation



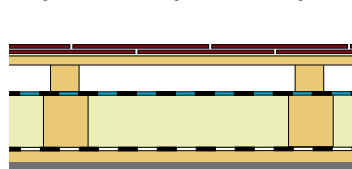
Roofing over lathes and boarding, foil above the boarding



Roofing over lathes with insulation



Roofing over lathes and boarding, foil under the boarding



### Technical Data

Fire response	EN 13501-1	F
Roll size		1,5 x 50 m (75 m <sup>2</sup> )
Thickness	EN 1849-2	0,50 mm
Planar weight	EN 1849-2	130 g/m <sup>2</sup>
Waterproofing	EN 1928	W1
Vapour permeability	EN 12572	s <sub>d</sub> = 0,05 m
Lengthwise/crosswise strength	EN 12311-2	205/140 N/50 mm
Lengthwise/crosswise stretch	EN 12311-2	40%
Tear resistance	EN 12310-1	130/165 N
Artificial aging effect	EN 1296	compliant